

# ISOLOADER

## "Econolifter"

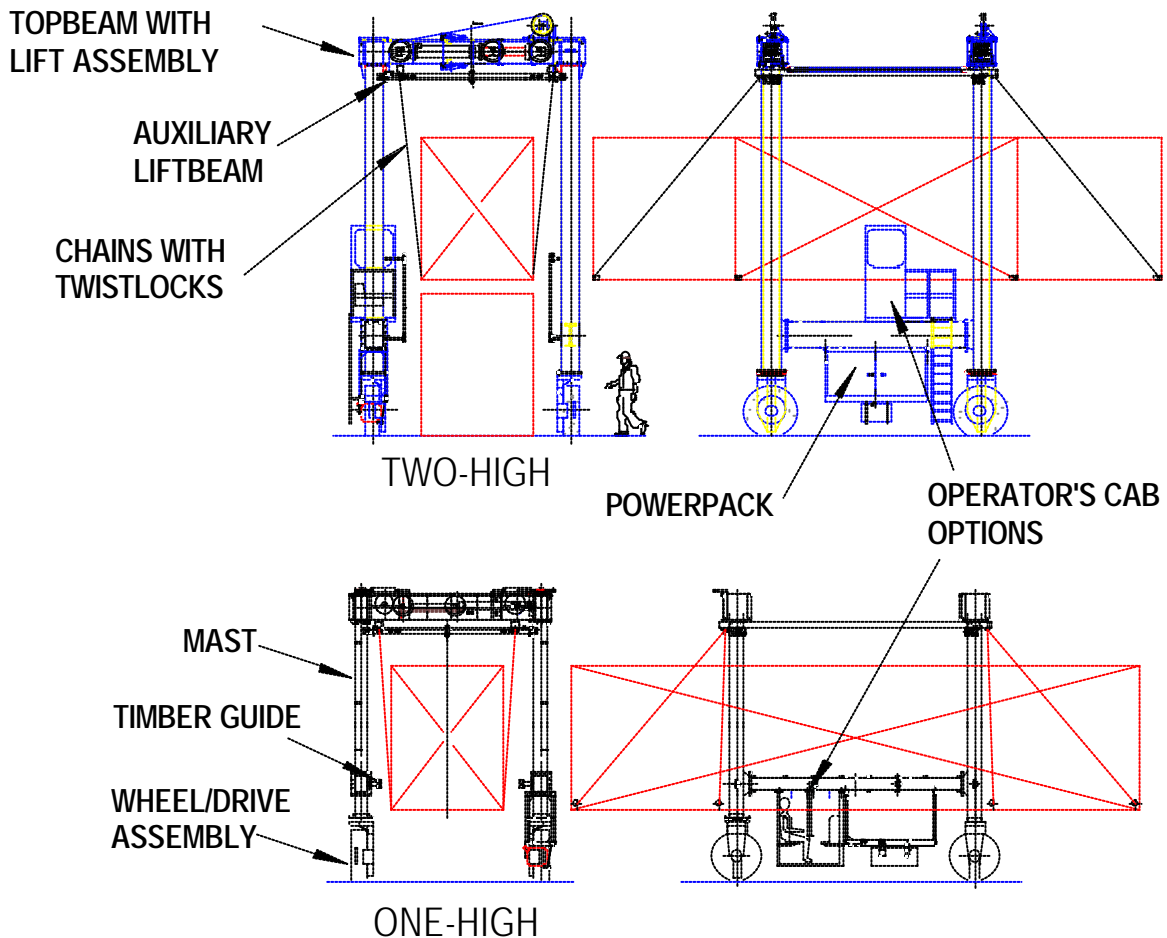
Model: EL  
Spec. No. ELST01-3

... to  
**36T**



### 1-OVER-1 HIGH "Econolifter" WITH OPTIONAL SIDE-SHIFT

The "Econolifter" is an economical solution when lifting and handling smaller numbers of containers. The machine could chain-lift up to 4-6 containers per hour (depending on the operation) in smaller scale sites such as transport yards, warehouses, and production plants. Toplift spreaders can be retrofitted later.



Lift Format		Lifting Rating Tonnes		Dimensions (mm)		Weight Kg	"Econolifter" Model
Stack	Spreader	SWL	AVG*	Height	Width		
ONE HIGH	Chains	36/32**	27	7415	5000	11460	EL1-36-CH6/12
1-OVER-1 HIGH	Chains	36/32**		9186		14360	EL2-36-CH6/12

\* AVG is a guideline for the average weight of containers handled, and relates to the build specification required.  
\*\*The SWL decreases to 32 Tonnes when the chains are used to lift containers at the 12m bottom castings. The 6m chain rating is still 36 Tonnes.

One-high machines above will handle containers up to 3048mm tall, and a maximum vehicle+container height of 4.6m  
Machine specifications can be changed to meet a specific condition. Examples of changes to specifications might include height, SWL, slopes >2%, four-wheel-drive, four-wheel-steering, a specific engine manufacturer etc. Contact your representative if the standard specifications do not meet your needs. All requests will be considered.

### Operational Data.

**Pavement:** Concrete, bitumen, compacted high-quality hardstand or other equal pavement. Slope 2%.

**Yard Layout:** Storage areas are normally laid out in rows with containers on 4-4.5m centres. If rows are set up at 30-45° from the access roadway, operational and cost benefits can be realized.

### Standard Features:

#### Structure.

The straddle carrier structure consists of four vertical masts with topbeams above (front and rear), wheel/drive assemblies below, and side beams (left and right) per the drawing on page 1. A powerpack is hung from one of the sidebeams. An operator's cab is positioned above or below the sidebeam, or alternatively, attached to one of the masts. Timber guides are provided on the container-side of the masts of the machine to help guide the operator when driving over a container.

#### Systems.

**Power Pack:** The powerpack contains a water-cooled diesel engine set driving a hydraulic pump set. Hydraulic controls and a reservoir system are behind the engine/pump group. A powerpack enclosure reduces the noise level for the operator. A fuel tank with built-in gauge is suspended from the powerpack for ease of access.

**Lifting:** Lift systems of hydraulic cylinders, sheaves and ropes, are enclosed in each topbeam. Each lift system raises and lowers an auxiliary beam. Each auxiliary beam is guided in its travel up and down by one pair of the masts. Chains hang

from the auxiliary liftbeam. Twistlocks are at the end of the chains, and these twistlocks are connected to the corner castings of the containers. The lift at each end of the container is independently controlled. Safety locks are provided against hose failure.

**Travel:** A hydrostatic drive provides infinitely variable speed control in both forward and reverse directions. A spring-applied fail safe brake system holds the machine when parked. Steering is powered by hydraulic cylinders. Tyres and rims are selected to match the application.

**Operator's Control Cab:** The placement of the open-type cab is selected to afford optimal viewing of the major operation to be performed at the site. The machine is designed to be controlled from the operator's cab. Direction is controlled by one lever. Each lifting system has its own levers to raise/lower the load. A push-pull valve controls the application of the parking brake. Powerpack operational indicators are provided. Any accessory lights provided are controlled from the operator's cab.

**Warning Devices:** Two (2) rotating amber beacons are provided, one at each end of the machine, usually mounted on a front and rear vertical mast. An electric horn is provided. A reversing beeper is offered as an option below.

**Major Painting:** A high grade protective paint system is applied to suit the anticipated operating climate. Any special conditions should be noted at time of proposal discussions.

### Product Optional Extras:

**Lighting Package:** Lighting for the load connections and for traveling within the yard. Includes associated interconnecting wiring and controls; upgrade in alternator to handle the additional load, all factory installed/tested at time of initial machine production

**Side-shift:** A set of auxiliary lift beams with integral side shift of ± 125mm is provided to assist in positioning the containers. The chain spreader connects to the auxiliary beams. Chains are hung on the hooks located on the chainlift spreader. Chain baskets are provided on the masts for storage of the chain set.

### Other optional extras:

Reversing Beeper  
Wheelguards  
Lighter Duty Auxiliary Chains  
Remote Radio Control  
Special Spreader Attachments  
4-wheel steering  
4-wheel drive

© ISOLOADER 2002: We reserve the right to update this specification at any time without notice

ISOLOADER AUSTRALIA Pty Ltd  
PO BOX 20, 8 BUCKMAN CLOSE  
SAWTELL, NSW AUSTRALIA 2452  
Telephone: +61 2 6658 1333  
Facsimile: +61 2 6653 2366  
[www.isoloder.com](http://www.isoloder.com)  
[sales@isoloder.com](mailto:sales@isoloder.com)  
SERVICE AND INNOVATION  
ACN 001 059 874 ABN 50 001 059 874