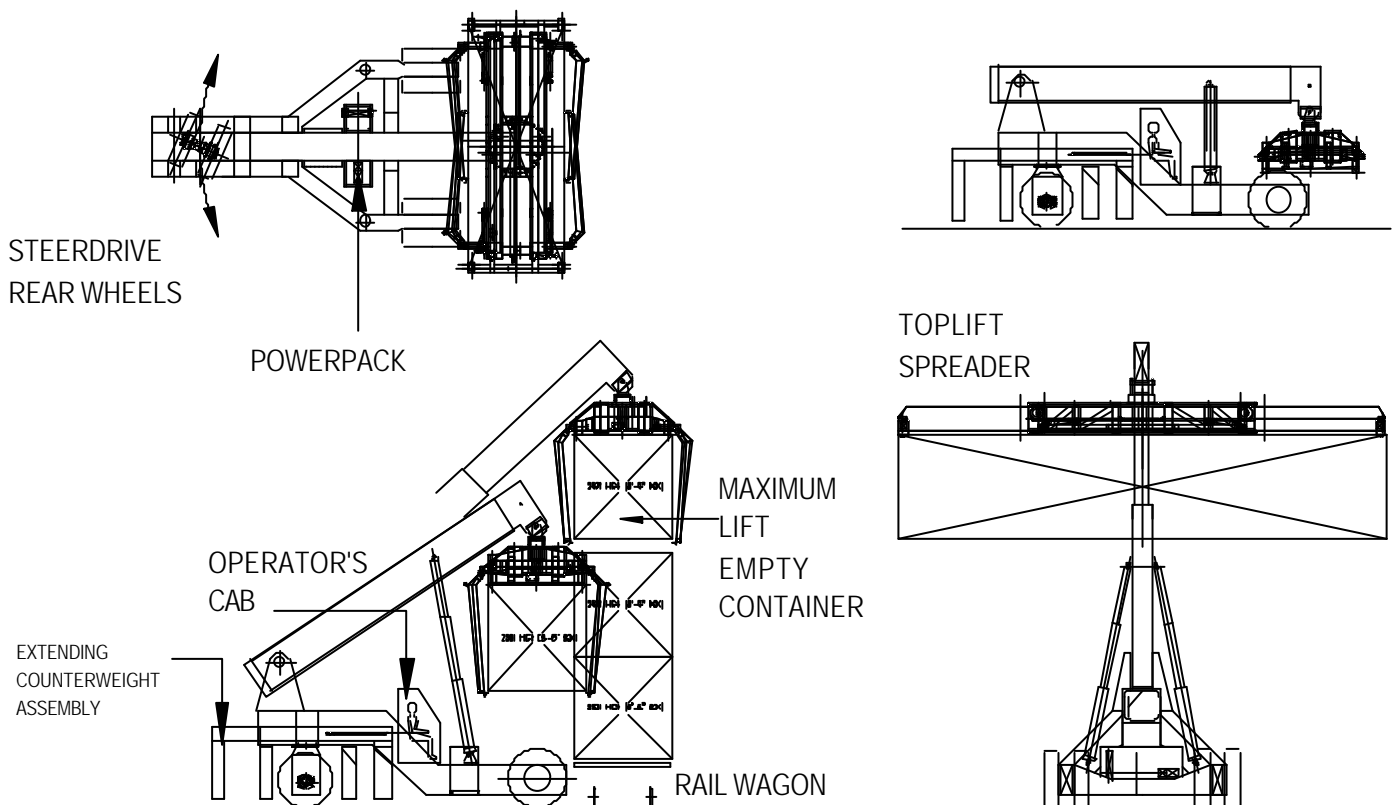


ISOLOADER

"Deck Handler" ... to **32T**
 Model: DH
 Spec. No. DHST01



The *"Deck Handler"* is a specialized all-wheel drive marine reach stacker designed for use on-board coastal vessels and large river barges. It is designed to reach out over the edge of the ship and lift a container from the wharf's edge. The operator retracts the boom to bring the container on-board the ship, and then stows the container on deck.



ISOLOADER "Deck Handler"

Model: DH
Spec. No. DHST01

Lift Format		Lifting Rating Tonnes		Dimensions (mm)		Weight Kg	"Deck Handler" Model
Stack	Spreader	SWL	AVG*	Height	Width		
THREE HIGH	6-metre	24	15	4100	6200/5220	27000	DH-24-6m
THREE HIGH	6/12m	32	27	4100	6200/5220	35000	DH-32-6/12m

* AVG is a guideline for the average weight of containers handled, and relates to the duty factor.

Overall machine length for both models is 10430mm.

Machine specifications can be changed to meet a specific condition. Examples of changes to specifications might include height, SWL, slopes >2%, a specific engine manufacturer and etc. Contact your representative if the standard specifications do not meet your needs. All requests will be considered.

These machines are designed with input from the owner/operator of the river barge or coastal vessel so the machine will interface well with the deck structure and the wharf tidal impact can be addressed.

This machine also has some limited applicability to land-use.

Operational Data.

Pavement: Concrete, bitumen, compacted high-quality hardstand, ship's deck or other equal pavement.

Deck Layout: Storage areas are normally layed out in block stacking fashion. The top (of 3 rows) row of containers needs to be empty containers.

Standard Features:

Structure.

The specialized reach stacker structure consists of a base containing a powerpack, wheel/drive assemblies, an open operator's cab, and a telescoping boom. A spreader is attached to the telescoping boom per the drawing on page 1. All wheels in the machine are driven for maximum traction on wet and slippery decks.

Systems.

Power Pack: The powerpack contains a water-cooled diesel engine set driving a hydraulic pump set. Hydraulic controls and a reservoir system are behind the engine/pump group. A powerpack enclosure reduces the noise level for the operator. A fuel tank with built-in gauge is provided.

Lifting: A lift system of hydraulic cylinders raises, lowers and extends the boom. A toplift spreader is attached to the boom. The toplift spreader's twistlocks attach to the container to be lifted. During travelling, the loaded container is carried over the forward wheels to spread the wheel loading more evenly between front and rear. Safety locks are provided against hose failure. Maximum outreach is 700mm. Vertical lift is +3000mm to -1500mm.

Spreaders: The powered 6m or 6/12m telescoping spreader incorporates hydraulic actuators, which operate the locking

and unlocking of each corner twist-lock. Mechanical and electric safeties indicate safe attachment and release of the container. An auxiliary set of lifting chains with twistlocks is provided. These chains are placed on the hooks located on the spreader. The chain set allows the lifting of out-of-shape containers and flat racks. Chain baskets are provided for storage of the chain set.

Travel: A hydrostatic drive provides infinitely variable speed control in both forward and reverse directions. A spring-applied fail safe brake system holds the machine when parked. Steering is powered by hydraulic cylinders. Tyres and rims are selected to match the application.

Operator's Control Cab: The placement of the standard open-type cab is selected to afford optimal viewing of the major operation to be performed at the site. The machine is designed to be controlled from the operator's cab. Direction is controlled by steering wheel or joystick. The lifting system has levers to raise/lower and slew the load. A push-pull valve controls the application of the parking brake. Spreader functions are controlled and status indicated. Powerpack operational indicators are provided. Any accessory lights provided are controlled from the operator's cab.

Warning Devices: Two (2) rotating amber beacons are provided, one at each end of the machine, usually mounted on a front and rear vertical mast. An electric horn is provided. A reversing beeper is offered as an option below.

Major Painting: A high grade protective paint system is applied to suit the anticipated operating climate. Any special conditions should be noted at time of proposal discussions.

Product Optional Extras:

Lighting Package: Lighting for the load connections and for travelling within the yard. Includes associated interconnecting wiring and controls; upgrade in alternator to handle the additional load, all factory installed/tested at time of initial machine production

Reversing Beeper

Tool Box

Pressure Test Kit

Wheelguards

Weighing Systems

6/9/12 Spreader

Lighter Duty Auxiliary Chains

Remote Radio Control

Special Spreader Attachments

© ISOLOADER 2001: We reserve the right to update this specification at any time without notice

ISOLOADER AUSTRALIA Pty Ltd
PO BOX 20, 8 BUCKMAN CLOSE
SAWTELL, NSW AUSTRALIA 2452
Telephone: +61 2 6658 1333
Facsimile: +61 2 6653 2366

www.isoloder.com
sales@isoloder.com

SERVICE AND INNOVATION

ACN 001 059 874 ABN 50 001 059 874

(Steelbro)

(Steelbro
Distribution)